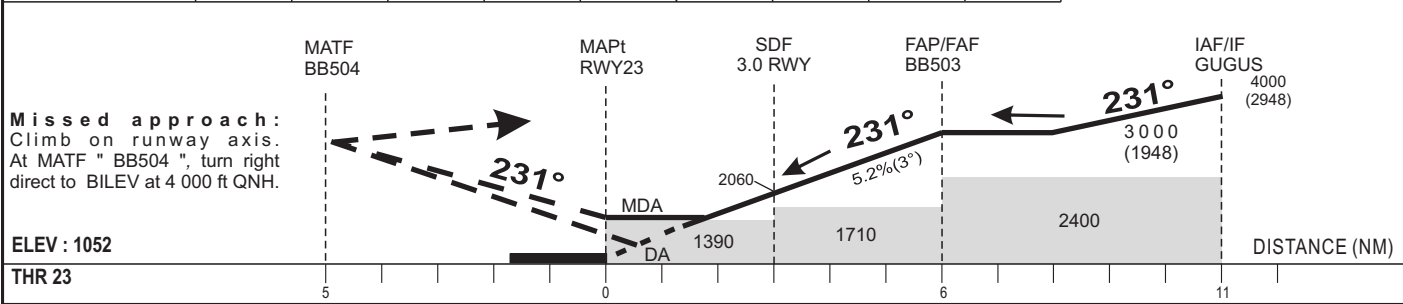


Distance to THR23 (NM)	FAP/FAF				5	4	3	2	1	TRANSITION ALTITUDE: 4 500
Altitude (ft)	3000				2700	2380	2060	1740	1420	



CAT	LNAV/VNAV			LNAV			Circling (*)			RVR for take-off CAT A - B - C : 400 CAT D : 400	
	OCA (OCH)	DA	DH	RVR(1)	OCA (OCH)	MDA (MDH)	RVR(1)	OCA (OCH)	MDA		MDH
A	1302 (250)	1310 (250)		1500	1385 (333)	1390 (340)	1500	1870 (818)	1870 (820)		1500
B	1312 (260)	1320 (260)		1500	1385 (333)	1390 (340)	1500	1870 (818)	1870 (820)		1600
C	1322 (270)	1330 (270)		1800	1385 (333)	1390 (340)	1800	2079 (1027)	2080 (1030)		2400
D	1332 (280)	1340 (280)		2000	1385 (333)	1390 (340)	2000	2079 (1027)	2080 (1030)		3600

**Notes :** - (1) Without approach lights  
- (\*) OCH and MDH AAL - Daytime only

- RDH : 15 m  
- Minimum temperature : 10° C.

KT	MIN		KT	MIN	
	SEC	SEC		SEC	SEC
90	4	00	140	2	34
100	3	36	150	2	24
110	3	16	160	2	15
120	3	00	170	2	07
130	2	46	180	2	00